

WISHING BET AVIV  
A GOOD YEAR

5785 / 2025



**Bet Aviv**

THANK YOU TO OUR  
2024-2025  
BUSINESS SPONSORS AND  
FRIENDS

# MEET OUR SPONSORS

Bet Aviv thanks our Business Sponsors who support our many spiritual, adult education, and caring programs. We appreciate the support, friendship, and dedication to our Bet Aviv community.

*"If you want to go far, go together."  
– African Proverb*

## Presenting Sponsor

Sol Levinson

## Platinum Sponsors

Cazbar  
HomeSlyce  
Tino's Bistro  
The Periodic Table

## Silver Sponsors

Katkov Dentistry  
Merrill Lynch Wealth Management,  
a Bank of America Company  
Osher Lifelong Learning  
Institute, JHU  
Shapiro Zwanetz & Lake,  
Attorneys at Law  
The Vertical Connection

# PRESENTING SPONSOR

*Sol Levinson*  
SINCE 1892

Funeral Services &  
Advance Planning



Our team of funeral directors serve the Howard County community with compassion and care. Advance Planning is the best way to help your family and ease the burden on them at an incredibly difficult time.

Call us or visit our website to learn more.

**Columbia**  
**5560 Sterrett Place, Suite 204**  
**410-730-7230**

Annapolis  
410-881-0801

[www.sollevinson.com](http://www.sollevinson.com)

Pikesville  
410-653-8900

A Tradition of Excellence - A Lifetime of Service

PLATINUM SPONSOR

# CAZBAR

AUTHENTIC TURKISH TAVERNA

*Experience Extraordinary*



THE FIRST AND THE BEST TURKISH  
RESTAURANT IN MARYLAND SINCE 2006

9400 SNOWDEN RIVER PKWY STE 122, COLUMBIA, MD 21045

PLATINUM SPONSOR

**HomeSlyce**  
PIZZA + BEER

**DINE-IN**  
**HANG-OUT**  
**GET DELIVERY**

Locations

Columbia - Clarksville - Mount Vernon

Canton - Towson - JHU



[www.HomeSlyce.com](http://www.HomeSlyce.com)

# PLATINUM SPONSOR



*Voted Howard  
County's Best!*

Tuesdays- Pizza Special  
Wednesdays- Kids Eat Free  
Please visit our website or  
Facebook page to see all o  
ur Weekly Specials!

**[TinosItalianBistro.com](http://TinosItalianBistro.com)**

8775 Centre Park Dr, Columbia  
MD 21045

# PLATINUM SPONSOR



THE  
**Periodic  
Table** EST. 2010 **PT**  
RESTAURANT and BAR

**15% off all  
lunch dishes!**  
(just mention this ad  
through August)

Our private room is  
perfect for your Events and  
Celebrations and our  
catering staff is here to  
help you plan.

[ThePeriodicTableColumbia.com](http://ThePeriodicTableColumbia.com)  
8808 Centre Park Dr, Columbia  
MD 21045

SILVER SPONSOR

# KATKOW DENTISTRY

8600 Snowden River Pkwy, Suite 106, Columbia, MD 21045  
410-730-2020 [katkowdentistry.com](http://katkowdentistry.com)



Baltimore  
MAGAZINE

2024

**TOP  
DENTIST**

Providing quality  
dentistry for more  
than 50 years!



# SILVER SPONSOR

With Merrill, the bull  
always has your back.



Our experience and insights will help you build a financial future tailored to your personal goals. Let's talk.



## **The CM Group**

**Richard Mohelski, CFA, CRPC™, CPFA™**

Senior Vice President  
Wealth Management Advisor  
Portfolio Manager

410.321.4328  
richard.g.mohelski@ml.com

## **Merrill Lynch Wealth Management**

901 Dulaney Valley Road  
Suite 516  
Towson, MD 21204  
410.321.4300  
fa.ml.com/cm.group



### **Investing involves risk.**

Merrill Lynch, Pierce, Fenner & Smith Incorporated (MLPF&S) is a registered broker-dealer, registered investment adviser, and Member SIPC. Bank of America, N.A., Member FDIC and MLPF&S are wholly owned subsidiaries of Bank of America Corporation.

The Bull Symbol and Merrill are trademarks of Bank of America Corporation. CFA® and Chartered Financial Analyst® are registered trademarks owned by CFA Institute. The College for Financial Planning Institutes Corp. owns the service marks Chartered Retirement Planning Counselor™, CRPC™, and the CRPC™ logo, and the certification marks Chartered Retirement Planning Counselor™, CRPC™, and the CRPC™ logo.

A Portfolio Manager can help clients pursue their objectives by managing on a discretionary basis his own Personalized or Defined Strategies, which may incorporate individual stocks and bonds, Merrill model portfolios, and third-party investment strategies.

© 2024 Bank of America Corporation. All rights reserved.  
MAP6153730 | AD-09-24-0403 | 472866PM-0124 | 09/2024

# SILVER SPONSOR



Quality  
classes  
you expect,  
surprising value  
too.

Osher at JHU offers enrichment learning at its best. Noncredit classes meet weekly for two, three, six, or 12 weeks. Choose what fits your schedule. Daytime and evening online classes are Monday through Thursday.

**Choose from three levels of membership:**

- \$200 Associate Membership includes two 12-week\* Fall classes
- \$325 Semi-annual Membership includes four 12-week\* Fall classes
- \$600 Annual Membership includes 12 twelve-week\* classes in Fall 2024 and Spring 2025

*\*(or equivalent combination of shorter classes)*

[Osher.jhu.edu](https://osher.jhu.edu), [osher@jhu.edu](mailto:osher@jhu.edu) or 240-595-2219.



**JOHNS HOPKINS**  
KRIEGER SCHOOL  
of ARTS & SCIENCES

# SILVER SPONSOR

## **Shapiro Zwanetz & Lake** ATTORNEYS AT LAW

**Criminal Defense, Personal Injury and  
Estate Planning/Elder Law**

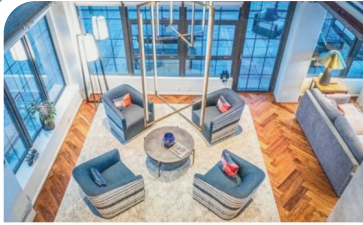
### **This Isn't a "Paycheck" This Is Our Calling**

At Shapiro, Zwanetz & Lake (SZL) we believe in thinking differently from most lawyers and law firms. We help our clients understand and accept their legal situation; we work with them to confront and improve that situation, while seeking the best outcome available at law. We recognize that each client is a unique individual, each deserving of the highest client/customer service; and we just happen to get our clients excellent results while we deliver that exceptional service.

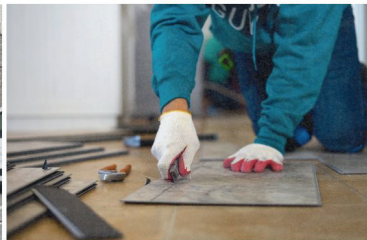


7226 Lee Deforest Drive, Suite 207  
Columbia, Maryland 21046  
P 410-884-6100 F 410-884-6583  
Call 24/7 410-794-6673 [www.szlfirm.com](http://www.szlfirm.com)

# SILVER SPONSOR



would like to wish Bet Aviv a  
Happy New Year 5785!



[VerticalConnection.com](http://VerticalConnection.com)

8895 McGaw Rd, Columbia, MD 21044

Carpet Window Treatments Flooring

# BET AVIV IS LOCATED IN THE OAKLAND MILLS INTERFAITH CENTER



**THE MEETING HOUSE  
5885 ROBERT OLIVER PLACE  
COLUMBIA, MARYLAND 21045  
410-992-9994  
INFO@BETAVIV.ORG**

**INTERESTED IN MORE INFO? SCAN  
THE QR CODE BELOW**



**Bet Aviv** is an inclusive, warm, welcoming, and socially-conscious adult Reform Jewish congregation. Forming friendships and community relationships are a feature of our synagogue. Members and guests feel at-home, are spiritually engaged, and can learn, question, and discuss. There are numerous classes and events both religious and social as well as opportunities to volunteer and assist in program development as well as in helping the community-at-large.

We are a synagogue that values creative ideas and programs, and are proud to have been awarded the prestigious 2024 National "Scientists in the Synagogue" grant sponsored by *Sinai and Synapses* in partnership with the American Association for the Advancement of Science and funded through the John Templeton Foundation.

Non-members are welcome to attend our services and programs.



**RABBI LINDA JOSEPH**

**CANTORIAL SOLOIST BETH RUBENS**

PRINTING PROVIDED BY:



**Brown & Associates, Inc.**  
*A family-owned printing company since 1979*

**9687 Gerwig Lane, Ste F, Columbia, MD 21046**  
**410.381.3399**  
**[BrownAndAssociates.biz](http://BrownAndAssociates.biz)**